

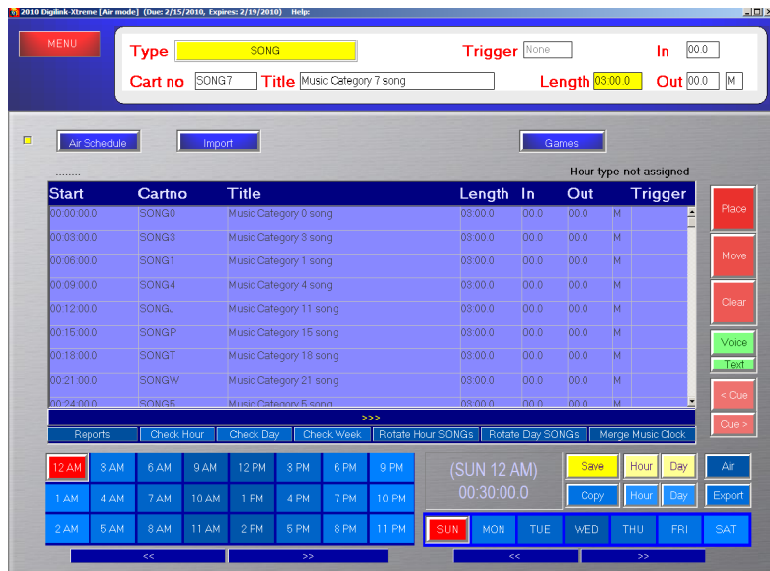
Music Template

Music Template Scheduling

The Digilink-Xtreme has a custom Music Scheduler feature. This allows users to create a custom music rotation for each specific hour. To setup and use a Music Template, follow these instructions:

Create a Music Template

- 1) go to the Scheduler Screen
- 2) select a Day and Hour that you would like to create the Music Template for
- 3) click on the Event Type button at the top
- 4) select SONG from the drop down list
- 5) click on the Cart no button
- 6) select SONG0
- 7) click on Place on the right side of the screen.
This first SONG0 category will be omitted from the music template, but is required for the music template
- 8) click on the Cart no button again, and this time select the song category that you want to play first in your Music Template rotation. Usually this will be a top category that you prefer to play often
- 9) click on the Place button to add to the schedule
- 10) repeat steps 8 & 9 until you have created a desired rotation. Step 8 being music categories that you desire for the rotation



An example rotation may be like the one in the image. If you wanted it to follow a pattern of categories: 3, then 1, then 4, then J, then P, then T, then W, ect... You would schedule it like the image above.

Song0 (this category will be omitted since it is the first line in the schedule)

Song3
Song1
Song4
SongJ
SongP
SongT
SongW

With this example rotation it will start the hour playing in a pattern of 3, 1, 4, J, P, T, W. When it hits the first spotset it will then start the pattern from the beginning. For example:

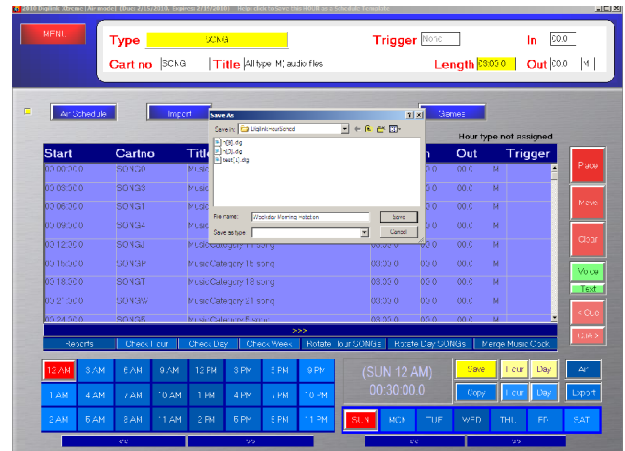
Song3
Song1
Song4
SongJ
Spotset (commercial break)
Song3
Song1
Song4
SongJ
SongP
ect...

Music Template

Saving the Music Template

Once the desired Music Template has been created, it is now time to save it. To save a Music Template:

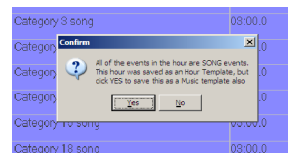
- 1) click on the yellow Hour button
 - 2) assign a name applicable to the type of rotation. An example may be "Weekday Morning Rotation"
 - 3) click on Save
 - 4) a message will now appear saying that all of the events in the schedule are music categories and will ask if you want to save it as a Music Template. Click Yes. *If this message does not appear then at least one event in the list is not a music category; recheck your schedule and repeat steps 1 - 4*
- A message will now display with a list of all Music Templates created and their associated days and hours



Quickly Adding Music Template to Other Hours

You have now created and saved a Music Template to the selected hour. To quickly add this Music Template to other hours, follow these steps:

- 1) with the desired hour selected, click on the Copy button. The word Paste will now flash Red
- 2) click on each hour that you desire to add the Music Template to. This will paste the template to each selected hour
- 3) you may copy and paste each day as well. For example, if you wanted to use this template for 8am to 11am, Monday through Friday; then paste to the 8am, 9am, 10am and 11am hours on Monday. Then copy Monday and paste to Tuesday, Wednesday, Thursday and then Friday
- 4) once the Templates are saved to each desired hour of the week, it is now time to save as a Template to the desired hours. Follow steps 1 - 4 in the Saving the Music Template instructions above. Do this for EVERY desired hour, or it will not save as a Music Template



How to Edit an Existing Music Template

To edit the existing Music Templates follow these steps:

- 1) select the day and hour for the desired editing
- 2) follow steps 3 - 10 for Creating a Music Template on the previous page
- 3) follow steps 1 - 4 under the Saving the Music Template instructions
- 4) follow steps 1 - 4 under the Quickly Adding Music Template to Other Hours if you desire to save the edited templates in other hours

RULES TO REMEMBER:

- 1) Music Template pattern repeats after each spotset (commercial break)
- 2) Audio MUST be assigned to each category in the Music Template or it will not work properly. For example, if you do not have any audio assigned to category 1; and you schedule a category 1 in the schedule, then it will not function properly
- 3) Music Templates must only have categories in the schedule. You cannot have a SONG All Type M Audio Files

How to Use Music Templates

To use the Music Templates follow these steps:

- 1) go to the Scheduler screen, and select Import
- 2) assign your traffic as normal
- 3) click on the Merge Music Template button. It must be done in this order. All hours with Music Templates, and traffic will now merge together