

## Music Templates – Music not filling in gaps

### Symptoms:

While using the Music Template feature in Xtreme, and merging the Music Template and the Traffic file, the music will schedule at the front of the hour, and the traffic (spotsets) fills at the end. The music should be filling in the gaps in between the spotset breaks. For example:

It should look like:

Song  
Song  
Song  
Spotset  
Song  
Song  
Spotset  
Song  
Song  
Song

But instead it looks like:

Song  
Song  
Song  
Song  
Song  
Song  
Song  
Song  
Spotset  
Spotset

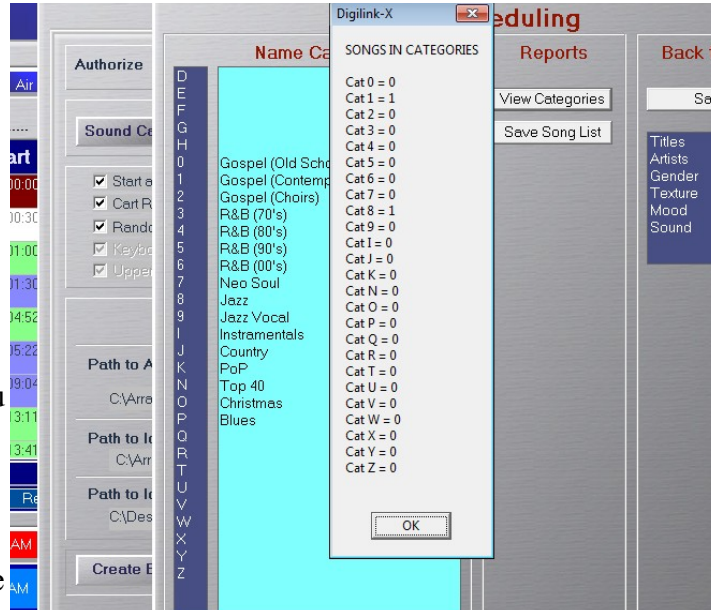
### Solutions:

The primary cause for this error is that there is a music category scheduled that does not have a song assigned to that category.

To resolve this issue:

- 1) go to the **Scheduler** screen
- 2) select the Day/Hour that is in question

- 3) note ALL music categories that are scheduled for that hour. You may need to open the Music Template again
- 4) go to **MENU**
- 5) go to **SETUP**
- 6) click on **Music**
- 7) click on **View Categories**. This screen will show all the categories and the amount of songs assigned to the categories
  1. if there are songs that are scheduled that do not have music assigned to them, then it is necessary to assign music to those categories before you can use those music templates
  2. if you see that the Xtreme doesn't recognize that there is music assigned to those categories, and in fact there are, then proceed on to the next steps



If the Xtreme shows that music isn't assigned to a category that in fact has music assigned to the category, then follow these steps:

- 1) go to the **C:** drive
- 2) open the **Arrakis** folder
- 3) open the **Xtreme** folder
- 4) open the **DigilinkSetup** folder
- 5) inside here is an **Audio Library.txt** text file. Email this file to [support@arrakis-systems.com](mailto:support@arrakis-systems.com). Explain which categories should be recognized, but isn't being recognized by the Xtreme

The likely reason for the music categories not having music recognized in the categories is because of 1 of 2 reasons:

- 1) the library size is incorrect
- 2) there is an invalid character in the file name of an audio file in the Library folder. This is usually a '[' or a ']' where the music categories is notated in the file name