

1200 series analog consoles

FEATURES

- ... 5, 10, 15 Channel Models
- ... Any channel can be factory setup as mic or line
- ... Built-in mix minus bus for a phone hybrid...
 - ... any channel can be DIP switch selected to the mix-minus bus
- ... VCAs & Electronic switching so no audio on pots or switches
- ... Penny & Giles slide faders for maximum reliability
- ... Clamshell design for installation & service from the Top
- ... Connectors inside the console for hidden wiring
- ... Balanced Program & Audition bus outputs
- ... Balanced Mono mix Outputs
- ... Two Balanced external (air) inputs to the control room monitor
- ... VCA's on Monitor & Earphone rotary faders
- ... (2) Remote select switches for Ten more inputs
- ... Relay isolated source start-stop logic
- ... Meters for both Program & Audition buses
- ... 2 year warranty

Where compact size, balanced audio, combined with the ultimate in rugged reliability are important, the 1200 console is the ideal choice.

The 1200 is a clamshell design that opens from the top for easy installation, calibration, and service. It can be tabletop or thru-table mounted. All wiring is to internal plug in connectors so that wiring is hidden after installation. The low profile is ideal for talk studio applications.

For reliability, only professional quality controls are used such as Penny & Giles slide faders, ITT Schadow switches, and 5M operation On-off switches. For increased operational life the console is entirely DC controlled with no audio on the faders or switches. All front panel controls are plug-in for quick replacement. All ICs are socketed. The console chassis is constructed from heavy duty aluminum and is epoxy painted with solid oak wood trim. The power supply is external, regulated, and short circuit protected. The 1200 is designed for many years of use in professional broadcast environments.

Power:	110-220 VAC, 50-60 Hz, jumper selectable, external supply	1200-5S	five channels	\$2,495
Size:	Height - 7", Depth - 12"	1200-10S	ten channels	\$3,995
	Width - (15") 1200-5S, (23") 1200-10S, (30") 1200-15S	1200-15S	fifteen channels	\$4,995



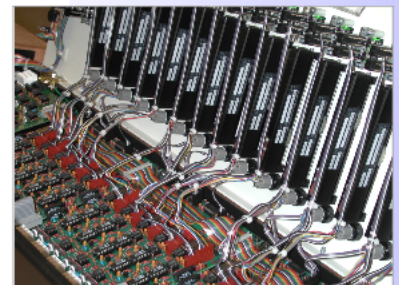
1200-5S



1200-10S



1200-15S



easy to install...

Description

The 1200 series of radio broadcast consoles were engineered and built for the challenges of the new millennium. High performance electronic design makes the 1200 console transparent to the best digital source audio. Features such as the Telephone mix minus bus make the 1200 easy to integrate into live or recorded telephone programs. All console wiring is connectorized to make installation quick and painless. The fully DC controlled electronic design removes audio from the faders and switches to dramatically extend control life. Only the highest quality components are used throughout, such as P&G faders, ITT Schadow switches, and AB conductive plastic pots with stainless steel shafts. The rugged 1/8" hardened aluminum chassis with epoxy paint and solid oak trim will make the 1200 attractive for years to come.

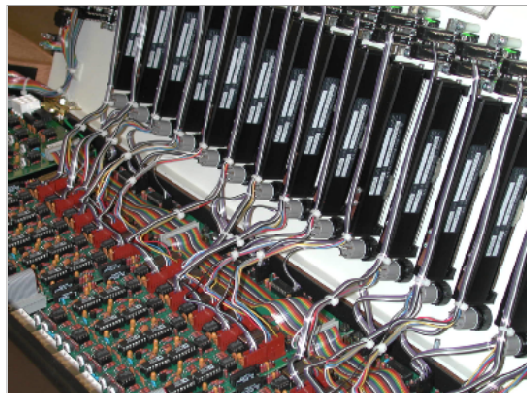
The 1200 console is ideal for small & major markets alike.

General Specifications

Input channels-	(5) 1200-5S,	(10) 1200-10S,	(15) 1200-15S,
InputS per channel-	(1) active balanced		
Selector switch-	(1) 1200-5S,	(2) 1200-10S,	(2) 1200-15S
	unwired 4PDT six position interlocked switch for user wiring.		
Total inputs-	(10) 1200-5S,	(20) 1200-10S,	(25) 1200-15S
Output buses-	(1) 1200-5S,	(2) 1200-10S,	(2) 1200-15S , active balanced
Mono mixdown-	all output buses , active balanced		
Monitor system-	stereo, unbalanced out, selectable- (2) external inputs, pgm, aud, mono		
Headpone system-	stereo, hi z headphones, follows monitor input selector.		
Cue system-	stereo auto-cue into monitor system (defeatable), mono unbalanced output for external speaker		
Power-	110vac - 220 vac, 50-60 hz, jumper selectable, external supply		
Dimensions-	7" H, 12" D, width- (15")1200-5S / (23")1200-5S /(30")1200-15S		

Electronics

Line inputs-	-20 - +8 dBu levels
Line S/N-	-85dB below +8dBu in/+8out
Mic in-	-115dB, -50dbu in, +8dBu out
Line thd -	<.02% typ, +8dBu in
Mic thd-	<.05% typ, -50dBu in
Freq resp-	+(-) .5dB, 20-20kHz
Max input-	+23dBu, line level
Max output-	+23dBu, balanced
Stereo Sep-	-82dB typ 1KHz -68dB typ 20kHz
Crosstalk	
Pgm to Aud-	-85dB typ 1KHz -75dB typ 20kHz
Cue to Pgm -	-90dB typ 1KHz -75dB typ 20kHz
Impedances	
Mic Input-	> 2000 ohms
Line Input-	> 10000 ohms
Outputs-	< 100 ohms



**... Easy to install,
operate, & maintain**