



NEW~WAVE



Quick Start Guide



REVISION 1.0

27 February 2014



NEW~WAVE QUICK START GUIDE

Congratulations on your purchase of the New~Wave automation system! This quick start guide is to help get you setup quickly and easily. More in depth information may be found in the New~Wave manual found on your USB stick, or on our website.

SECTION 1 CUSTOMER SUPPORT & IMPORTANT NOTES

ONLY APPLICABLE TO SECURENET CUSTOMERS

- 1) This software is fully functional so long as the customer has a current account with Securenet Systems.
- 2) The software requires an internet connection to the PC, and the USB dongle must be plugged in at all times.
- 3) Email support is included at no cost. Please email nwsupport@arrakis-systems.com for assistance.
- 4) At your convenience, please setup a time for the New~Wave support team to configure your On-Air PC. You are entitled to a 1 time 30 minute configuration. Email nwsupport@arrakis-systems.com to setup a time.
- 5) Additional support and training is available, for more information please go to our website to learn more: www.arrakis-systems.com
- 6) Please visit our website for recommended PC specifications for the New~Wave software.

SECTION 2 NEW~WAVE SETUP

In the box that came with your order, there will be a New~Wave USB stick. This USB stick contains the software install, and is the unlock for the software.



IMPORTANT NOTE: This software is unlocked via the USB stick, and therefore requires the USB stick to be plugged in at all times. If the key is lost, damaged, or stolen, then a new key must be purchased.

To install the software:

- 1) Connect the USB stick to the PC you want to install New~Wave on.
- 2) Open the USB drive in Windows.
- 3) Double click on the **Install NEW~WAVE.exe**.
- 4) After installation, it will have added a [C:\New~Wave](#) folder, and created a shortcut on your desktop.



Since the software is unlocked via the USB stick, you may copy the [C:\New~Wave](#) folder and put it on as many computers, or hard drives that you like. This is an excellent feature for backing up the software. If for any reason you want to switch to a different computer, simply remove the New~Wave USB stick and connect it to the new computer.

SECTION 3 WIRING SETUP

This section explains the steps for the most basic of configurations for wiring your audio. The main manual has a section with a more in-depth explanation for wiring with other scenarios.

BASIC SETUP OPTION

This is the most basic setup option.

HARDWARE REQUIREMENTS:



PC



*USB Speaker
(optional)*



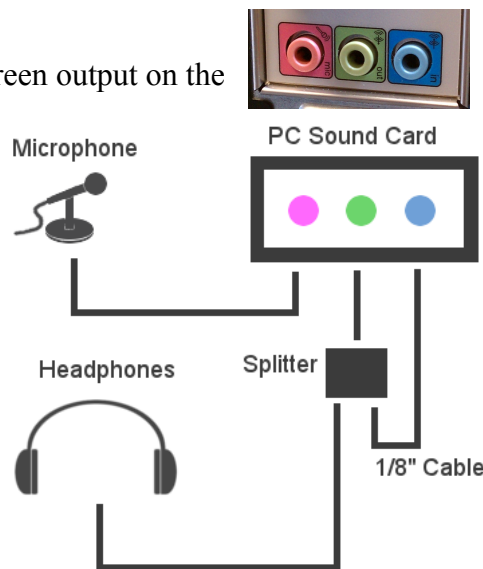
*Splitter cable – 1/8" Female to Male/Male
(included)*



*Microphone
(optional)*

SETUP STEPS:

- 1) Install the New~Wave software as explained in section 2.
- 2) Take the included *Splitter cable* and connect a male end to the Green output on the back of the New Wave PC.
- 3) Take the other Male end of this cable and connect to the Blue input on the back of your PC.
- 4) You may plug in headphones or computer speakers to the Female end of the *Splitter cable*.
- 5) You may also plug in an optional *microphone* into the Pink Mic input on the PC.
- 6) Open the New~Wave software. Select **Setup** on the top of the main screen.
- 7) Click on **Sound Cards**.
- 8) In the **Windows Play Sound Card List** section, select the built-in PC sound card.
- 9) Click on the **Assign** buttons for **Live Play & Automation Play**. For the **Cue Play**, you may choose the USB Speaker sound card if you have the option.
- 10) To record what is playing, you may also select the PC sound card for the **Record** and click **Assign**.
- 11) Select the **Windows Sound Manager** at the top of the **Sound Card Manager** screen.
- 12) For the **Recording** tab, select **Set Default** for the Microphone input that you plugged your microphone into.



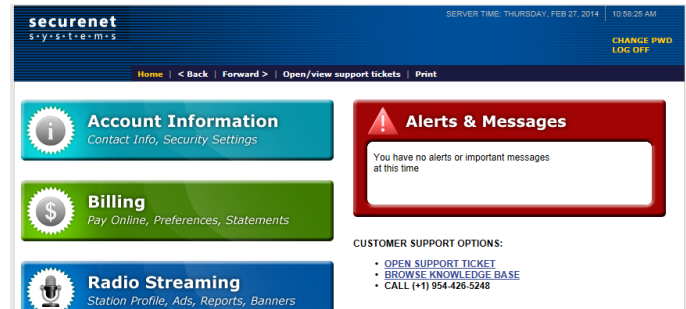
IMPORTANT NOTE: With this setup, you can only record voice tracks (from the scheduler screen) using your microphone. You will be unable to broadcast your voice live. To do this, you will need a console such as the ARC-8 and follow its setup instructions. If your sound card supports internal mixing, be sure the line in is not looped to line out.

SECTION 4 STREAMING SETUP

SECURENET ONLY (OTHER SETUP INSTRUCTIONS MAY BE FOUND ON OUR WEBSITE)

This section explains the steps to setup your internet stream using Securenet. These steps can change at any time. As such, it is recommended to speak with Securenet for assistance with setting up your internet stream.

- 1) Go to the Securenet website.
- 2) Select **My Account** to login. Sign in.
- 3) Select **Radio Streaming**.
- 4) Select **Support & Setup Guide**.
- 5) Instructions found here will be based on your setup. Click on **DCS (Data Capture Software) download and setup instructions**.
- 6) Download the **DCS.zip**. Extract all files after downloading.
- 7) Open **setup.exe**. And run through installation.
- 8) Open **DCS Configuration software**.
- 9) Enter the information as listed on their website help.
- 10) From the **DCS Software**, select **Arrakis** from the drop down menu.
- 11) Click on **Next**.



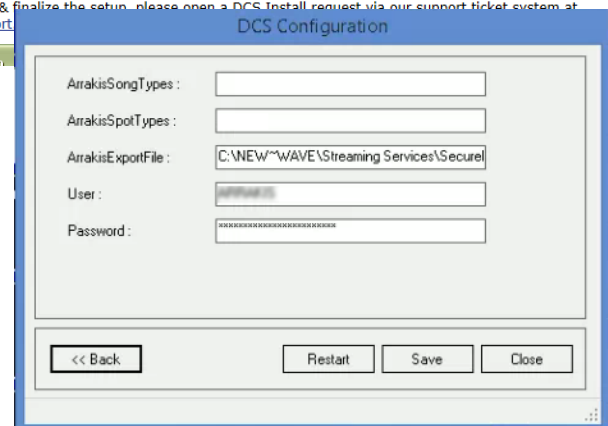
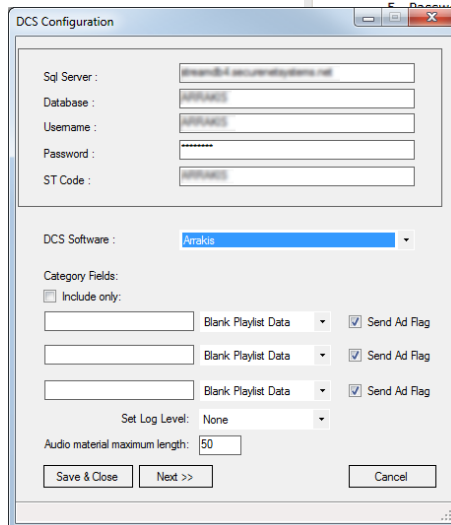
ENCODER SETUP AND CONFIGURATION

DCS DOWNLOAD AND SETUP INSTRUCTIONS

If you haven't installed the DCS software, please download and install from the link below:
<http://support.securenetsystems.net/stream/DCS.zip>

Once the installation is complete, run the program and follow the steps below.

1. At the DCS Configuration window, enter the following:
2. SQL server:
3. Database:
4. Username:
5. Password:



- 12) For **ArrakisExportFile** : enter the path **C:\NEW~WAVE\Streaming Services\SecureNet.xml**
- 13) The path may be different if you are pathed over the network. The path should be sent to the PC the New~Wave software is playing from.
- 14) Click **Save**.
- 15) Go back to the Securenet website and go back to the **Support & Setup Guide** page.
- 16) Select **Streaming encoder download & setup instructions**.
- 17) Download their encoder software and install using their instructions.
- 18) When you select the **Source** in the AAC encoder software, you are selecting which sound card the audio is being received at. In the BASIC SETUP OPTION, you will be using the PC sound card.

SECTION 5 SOUND CARD SETUP

Typically a PC will have 1 sound card. Ideally, with the New~Wave, you have 3 sound cards. IF you purchased one of our ARC consoles, then you have a second sound card. IF you purchased our DAC sound card, then you have a 3rd. IF however you have only one sound card, you will be OK, but it is better to have 3, and you may want to consider purchasing an ARC console, and or a DAC (info may be found on our website).

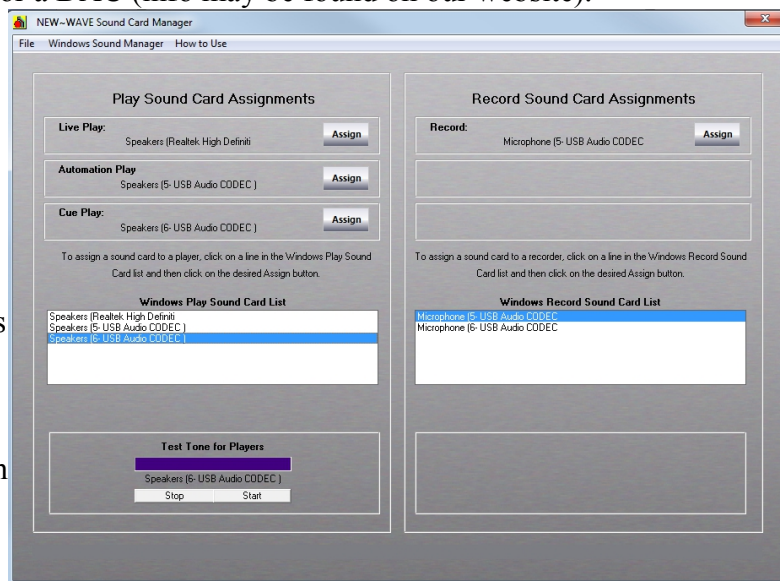
---To access the **Sound Card Manager** screen, go to **Setup** and select **Sound Cards**.

You will notice on the left of the screen you have the option of changing the assignments for Play. On the top left you have the 3 players, and on the bottom left you have the sound cards that are available (these are the sound cards that your PC is currently connected to).

---To change the assignment,

- 1) Select the desired sound card on the bottom left.
- 2) Then click **Assign** for the play output you want (such as Live Play). Ideally you have a different sound card for Live Play, Automation Play & Cue Play. This way you can play 3 different things at once, and not have it play on top of each other.

It is the same steps for selecting which sound card will record, except you will use the right half of the screen.



SECTION 6 ADDING AUDIO

This section will cover how to add audio to the New~Wave automation system. New~Wave is capable of playing MP3, MP2 & WAV format files. It is recommended to use MP3 files since they have tag data (only ID3v1 tags are used, use NCH Switch to convert) and will save time for naming the Title & Artist information.

To add audio:

- 1) Open the New~Wave software.
- 2) Go to the **C:** drive, and open the **NEW~WAVE** folder.
- 3) Open the **Import Audio** folder. You should create a shortcut to this folder for easy access.
- 4) Place any audio file(s) into this folder while the software is running. Every 30 seconds it will look to this folder and add files in batches of 20 at a time.
- 5) IF you have over 1,000 files to add at one time, then a time saving method would be to add files directly to the C:\NEW~WAVE\Library folder. You will need to restart the software for the software to recognize the additions. Otherwise, NEVER add, remove or edit audio files in the Library folder. This should be done in the Library Manager within the New~Wave software.

It will default to give your carts a cart number of 90000 and count up from there. You may view these files from the software in the Library Manager screen and edit the information as necessary.

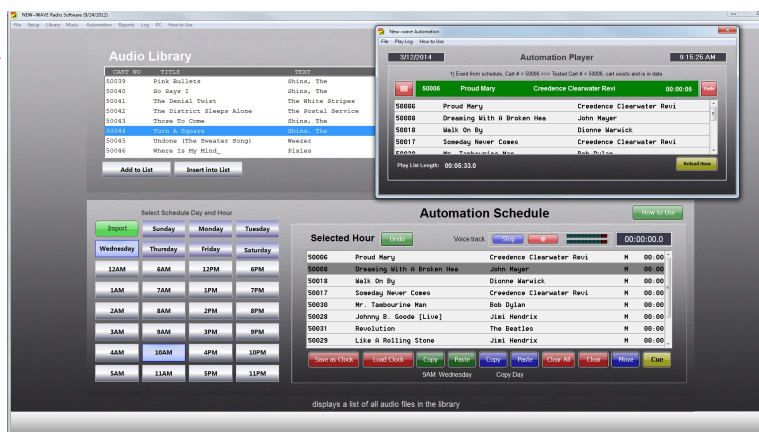
SECTION 7 LIVE VS AUTOMATION

LIVE PLAYER VS AUTOMATION – The New~Wave gives you the ability to have a Live Player that is separate from your automation. With the Live Player (the default screen you open up to), you have access to a play list that you can create and save play lists, as well as Hot Keys that you can play files on the fly. There is also a recorder that allows you to record whatever audio is going in to your designated record sound card. This screen is very effective for any live show.



The Automation Player is separate from the Live Player. With the Automation Player, you can create a full, week long, 24x7 schedule. You can also use the Automation to create voice tracks so that you sound live, even when no one is there.

Since the players are separate, this means you can create a live show, record it for later playback, and all the while you can have your automation playing something completely different over your internet stream.



SECTION 8 ADDITIONAL INFORMATION

There are two excellent resources for learning more about the New~Wave automation:

- Instruction Manual** – this has a comprehensive set of instructions on how to setup and operate your New~Wave automation software. A copy of this manual can be found on the USB stick, but the most current version can be found on our website.
- Video Tutorials** – on our website is a comprehensive collection of video tutorials explaining the basics of the software. This is a great asset for visual learners. You may find these video tutorials in the Automation Support section of our website.

NOTES: _____



Arrakis Systems

6604 Powell St.

Loveland, CO 80538

970-461-0730

www.arrakis-systems.com

nwsupport@arrakis-systems.com