

Xtreme-Complete

Digilink Radio Automation



Dell Optiplex Business PC

- 3 year on site Dell support

Arrakis Bridge Radio Station interface

- Dual sound cards for Program and Cue
- 16 input stereo switcher for Program & Record
 - Logic for 16 satellite sources

1 Year Arrakis Solutions Support program

- Free Telephone training
- Free Training at Factory studios
- Free Telephone support
- Free software updates
- Free hardware service on Arrakis Bridge

Date: 11/1/2010

\$6,500 list



Product Description

- **A Radio Station in a single Box**

Xtreme-Complete is a radio station in a box. On air, production, scheduling, & reconciliation can all be performed at the same time on a single PC. Unlike other systems that are a complex Chinese menu to order, no additional hardware or software is required. All features are included for one price.

- **Full Featured Software**

Xtreme fully supports all types of on air operation: live, live assist, hard disk automation, and satellite automation. For live operation Xtreme features a play list with up to 500 events, a 300 cart hot key wall, a directory search by cart-title-time-artist, and a phoner recorder with editor. For hard disk automation, Xtreme features a powerful and yet easy to use music scheduler with up to 25 categories and a wide variety of selection criteria. The satellite automation system supports up to 16 satellite sources which handles even the most complex sports-talk format. With voice tracking, Games feature, a one week scheduler, a one week timed recorder, autofill of out of kill events, time squeeze, powerful logging, and much more, Xtreme is an exceptionally full featured live air, production, and automation system.

- **Powerful Hardware**

The Xtreme automation system features dual audio outputs for Program and Cue. Up to four audio streams can be mixed to program while cueing. The system also features dual simultaneous records for timed recording and phoner recording. Unlike other systems that only support 8 inputs, the Bridge routing switcher has 16 stereo inputs with dual outputs to support the most sophisticated news-talk formats. Any of the 16 inputs can be played on air while any of the 16 inputs can also be recorded. The switcher has logic for up to 16 satellite channels. All inputs and outputs are professional active balanced circuits with trimpot adjust. Xtreme is the most powerful automation system in radio.

- **'PC' + 'Bridge' = Better Design**

Xtreme is simply better by design. Where other systems require expensive and difficult to service custom PCs, Xtreme only requires a standard off the shelf PC that plugs by USB cable into our 'Bridge' black box. The 'Bridge' contains all of the 'radio specific' parts of the system: sound cards, switcher, and logic. With this kind of system, the PC can be supported by local IT techs who do not need to be broadcast engineers, while the 'radio' parts of the automation system can be easily installed and supported by radio engineers who do not need to be PC experts. Installation and maintenance are dramatically improved.

- **Fast & Easy to Install**

All audio and logic connections to the system are to the Arrakis 'Bridge' black box (unlike other systems that wire to PC audio cards, a separate switcher, and a 3rd logic unit). All wiring is connectorized for ease of prewire and test. The system can be installed in a just a couple of hours.

- **FREE Training**

Unlike other systems that cost \$100 or more per hour for telephone training, telephone training is FREE under the Xtreme 'Solutions Program.' Even hands on training at the Arrakis studios in Loveland, Colorado is FREE under the Xtreme 'Solutions Program.' For those who can't come to beautiful Colorado, hours of FREE video training tutorials are provided on the Arrakis website. For those who require on site training at the radio station, this service is also available, at industry standard rates.

- **Next Business day Service**

The unique nature of the Xtreme automation system, which divides the system into a PC and the 'Bridge', makes service fast and easy. The Dell Optiplex business class PC is provided with 3 years of next business day, on site support. During the one year warranty period (and during an extended warranty), the 'Bridge' is replaced on the next business day from the Arrakis factory. What could be easier? Compare this to service on the complex custom PCs in other systems where the audio cards, switcher, and logic cards are all built by different companies.

- **Scheduling, News & Production studio software is FREE with Xtreme**

A single Xtreme workstation is required for each on air signal. While any single Xtreme can perform on air, production, and scheduling, most stations have separate studios for scheduling, production, news, etc. Unlike other systems that require use of their extra cost PCs or extra cost software, Xtreme comes FREE with 'X-Sched' software for the scheduling room, 'X-edit-pro' for the production room, and 'Xtreme- Studios' for the news room.

- **Easy Networking: no file server required**

Xtreme does NOT require an extra cost file server computer to network the studios in your station. You can use a file server with low latency network if desired, however the audio library, scheduling, and log files can be mapped to anywhere on your network. It is recommended that the audio files be stored on the on air machines and the other studios be mapped to those PCs. Simple and inexpensive, thousands of Digilink radio stations have demonstrated the reliability of this network configuration.

- **Thousands Sold...**

Over 4,000 Digilink automation systems have been sold around the world since first introduced nearly 20 years ago.

Digilink-Xtreme... is a powerful Windows based Radio automation system that is also easy to use. The best way to learn about the power of Xtreme is to download the demo software which will operate on any Windows XP, Vista, or Windows 7 PC using the PC's own sound card(s). To download the software go to....

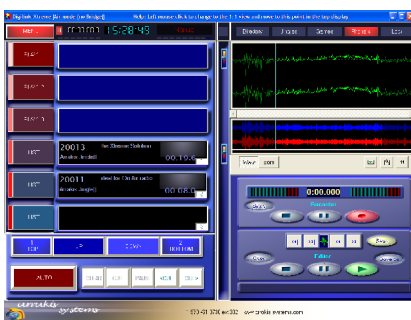
www.arrakis-systems.com
or directly to
<http://arrakis-systems.com/xtremedemo.html>

On Air Studio



Xtreme does it All
Live on air
Satellite automation
Music on hard disk
500 event play list
300 Jingles
Phoner recorder
Ball games w delay
16 source switcher
Triple play to air & cue
much more...

News & Remote studios



'Xtreme-studio' software
'FREE' w Xtreme
Runs on any off-the-shelf PC. Perfect for News rooms, remotes, etc. Has all of the features of standard Xtreme except for those requiring the Bridge and does not load schedules for automation.

Traffic & Music offices



'X-sched' software
'FREE' w Xtreme
use in a traffic scheduling office for manual scheduling, importing 3rd party schedules, and creating logs for exporting to your Traffic and Billing software

Voice Tracking Studios



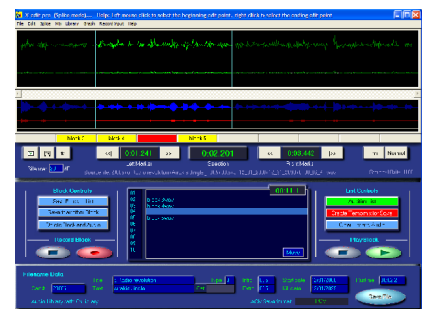
Perfect every Time
just select a line in the playlist and click on the Voice button. Xtreme automatically records, sets the overlaps, and inserts the voice track into the schedule.

Remote voice tracking is supported by industry standard PC features.

Production Studios



Xtreme Production
Timed Net recorder
Voice track recording
Phoner record-editor



'X-edit-pro' software
'FREE' w Xtreme
Multi-block editing, stereo production, autoleveling, auto trim silence, Wave & MPEG files,

Specifications

Digilink-Xtreme is a complete on air, scheduling and production system. It includes a Dell PC, Arrakis 'Bridge' hardware, Xtreme software, and 1 year of Xtreme Solutions support.

| | | |
|------------------------------|---|--|
| * PC Hardware: | | |
| * PC model: | DELL Optiplex 380 (or equivalent) | 2.4GHz |
| * Interface: | mouse, keyboard, 19 inch LCD monitor | |
| * Drives: | 32X DVDROM, 48X CDRW, 250GB hard drive | (60GB of audio is ~12,000 songs MP3 at 192k) |
| * Service plan: | Dell 3 year on site economy plan | |
| * Features: | subject to availability and may change without notice | |
| * Xtreme Software modes: | (a) Xtreme-Air: | when connected to Bridge hardware, Xtreme software enters this mode and has full functionality |
| | (b) Xtreme-Studios: | when NOT connected to a Bridge, Xtreme supports all features that do not require a Bridge. |
| | (c) X-Sched: | for use in Traffic rooms where only the Scheduling & Log screens are displayed (no Bridge required) |
| * Play & Record hardware: | (a) Pgm, Cue, Rec: | Bridge has dual internal sound cards (dual play & single record). Connects to PC via USB cable. |
| | (b) Aux features: | Phoner editor & Voice tracking use PC sound card in Dell |
| * Audio File support: | (a) formats: | uncompressed WAV, MP2, MP3, any combination of formats |
| | (b) mono/stereo: | any combination of mono or stereo files |
| | (c) sample rates: | any combination, up to 320kHz max |
| | (d) # of files: | default size: 4000 audio files (larger library sizes software selectable) |
| | (e) Library folder: | all audio files must be located in a single audio library directory |
| * Simultaneous audio: | | mix of 3 audio streams to Program output plus Record & Cue |
| * On Air Features: | | |
| * 6 player cart deck | (a) live mode: | manual loading of 500 event playlist for live operation |
| | (b) automation: | automatic loading of 500 event playlist from schedule for live assist or fully automated operation |
| * Jingle button array | yes, | 300 total (10 pages of 30 jingles) easily assignable for fast show prep |
| * Games | yes, | manual or automated games with 2nd play list. (Closures: start, stop, rain delay, return to game) |
| * Audio file search: | yes, | Cart #, Title, Artist, Time |
| * Cart Rotation: | yes, | supports start & kill dates (dash in 3,4,5,6 position in 8 char cart number. example CART-01) |
| * Satellite Automation: | (a) Sat channels: | 16, audio and logic |
| | (b) Jocks: | 20 max |
| | (c) Logic window: | user defined for each hour in the Air Schedule |
| | (d) Liner mode: | random or sequential play (global setting) |
| | (e) Autofill breaks: | yes, system chooses from a special 'A' category to replace non-existing or out of date events |
| | (f) Time Adjust: | yes, every event can be time adjusted (+)(-) 4% to achieve the exact break length |
| | (g) Break types: | timed or floating (with manual trigger or closure) |
| * Scheduling: | | |
| * Length: | 1 week, looping | |
| * Events per hour: | 100 events | |
| * Import Format: | DL-III & DL-IV, | supported by all leading scheduling systems |
| * Traffic Import: | yes, | supported by all leading Traffic scheduling systems |
| * Music Import: | yes, | supported by all leading Music scheduling systems |
| * Internal Music Scheduling: | yes, | 25 categories, 15 predefined clocks plus custom Clocks, powerful scheduling rules |
| * Overscheduling: | yes, | drop event removes overscheduled events |
| * Special Events: | yes, | timed, drop, satellite on-off, switcher source, RS232 commands (ie: receiver control) |
| * X-sched: | mode, | software selectable mode within Xtreme for a Traffic scheduling & reconciliation room |
| * Logging: | (a) Play Log: | display all events or a filter of events by type |
| | (b) Reports: | all events, traffic only, or filtered by type |
| * Production: | | |
| * Manual Recorder: | (a) applications: | short format production: news, spots, voice tracks, promos, etc. |
| | (b) format: | WAV, .MP2, .MP3, selected by Windows Audio Compression Manager (ACM) |
| | (c) start: | manual or timed record |
| | (d) autotrim: | no |
| * Voice Track: | (a) format: | .WAV only, global setup, uses PC sound card. Cart number starts with 'V'. |
| | (b) delete: | auto-deleted after play, (cart number is autoassigned during recording) |
| | (c) remote VTing: | yes, uses industry standard services (such as 'Go to My PC' and 'Skype') |
| * Timed record: | (a) per hour: | 20 maximum, (format: .WAV, .MP2, .MP3, selected by Windows ACM) |
| | (b) trigger: | timed or closure (uses Bridge for input selection, sound card, and logic) |
| | (c) schedule: | 1 week, looping |
| * Phoner Editor | (a) description: | wave recorder, single block, phoner recorder-editor, uses PC sound card |
| * File data (overlap, dates) | (a) Library screen: | set audio overlap times while listening to the file. Enter other file data easily in the Library screen. |
| * X-edit-pro | (a) editor: | separate software utility provided with Xtreme for recording, editing, & naming audio files |
| * Text Support: | (a) Note line: | 1 line event in the schedule |
| | (b) Tagged text: | variable length text file tagged to any audio event. Displays tag symbol in the play list. |
| * Audio File Data: | (a) fields: | cart #, title, text, type, runtime, start date, kill date, time to voice, EOM,... |
| | (b) storage: | data saved in the filename |
| | (c) ID3V1: | Xtreme reads ID3V1 tag data from CD rippers to facilitate renaming audio files |
| * Networking: | (a) schedule: | supports network mapping, schedule from anywhere on the network |
| | (b) audio library: | supports network mapping, play from anywhere on the network, (recommend audio files on the On Air PC) |
| * Remote Control: | yes, | by industry standard programs such as 'Go to My PC' |
| * RBDS: | yes, | RS232 output (USB to RS232 adapter required) and writes to an RBDS text file |
| * Time sync: | yes, | closure required to Bridge logic |
| * Console control: | yes, | play list start & stop, closure required to Bridge logic |
| * Help System: | (a) help line: | on screen, context sensitive, move cursor over the object |
| | (b) e-manual: | on screen, searchable, topic based |
| | (c) PDF manual: | supplied in text and PDF format for use by customer |
| | (d) printed manual: | supplied with order. |

Ordering

| MODEL NUMBER | DESCRIPTION | LIST PRICE |
|--------------|---|------------|
| DX-COMPLT | Xtreme automation workstation <i>includes:</i> Dell Optiplex PC (per current configuration) 19" LCD monitor, keyboard, mouse Dell, 3 year, next business day on site service PC configuration and Setup for Automation Xtreme Bridge Xtreme software 1 Year DX-SUPPORT (Xtreme Solutions Program) | \$6,500 |
| DX-DELL-PC | Dell Optiplex PC (per current configuration) 19" LCD monitor, keyboard, mouse Dell, 3 year, next business day on site service PC configuration and Setup for Automation Xtreme software (Xtreme-studios or X-sched) 1 Year DX-SUPPORT (Xtreme Solutions Program) | \$1,295 |
| DX-TRAIN | On Site training (per day, 3 day minimum, expenses extra) (plus all expenses, includes travel time) | \$1,000 |
| DX-FACTORY | Training at Arrakis Loveland facility | No charge |
| DX-SUPPORT | Extended Xtreme Solutions support contract (1 year) | \$1,200 |
| DX-UPGRADE | Xtreme software upgrade | \$500 |
| LIBRARIES | refer to separate price sheet | \$995 |

XTREME SOLUTIONS PROGRAM (DX-SUPPORT)

1) FREE Factory training...

Arrakis maintains training studios in its corporate headquarters in Fort Collins, Colorado. The Arrakis Xtreme 'Solutions' program provides free training at its studios in Fort Collins.

2) FREE Telephone training and support ...

The Xtreme 'Solution' provides sophisticated support for station personnel by phone, email, web, and other electronic means. Training, maintenance, repairs, and routine support are provided free of charge within the Xtreme 'Solutions' program during business days and hours.

3) FREE hardware replacement...

If the Arrakis 'Bridge' hardware should fail for any reason, Arrakis will replace it under our 'Solutions' program on the next business day.

4) FREE Software Upgrades...

One absolute certainty is that PC technology changes. Operating systems are only one example... Windows 95, 98, Me, NT, 2000, XP, VISTA, and now Seven. Automation software is no exception. Each year sees a new version costing hundreds or even thousands of dollars. With the Xtreme 'Solutions' program, you receive the new versions at no charge.

AFTER WARRANTY SUPPORT

- 1) Purchase additional 1 Year Warranty support contracts (DX-SUPPORT)
- 2) \$99 per incident phone support
- 3) \$500 software upgrade
- 4) Bridge hardware repair: as required

Brochure: 11/1/2010

